

# OPEN TRANSPORT DATA MANIFESTO

17 SEPTEMBER 2012, HELSINKI

1

## RICH POTENTIAL

Open up transport data! Why? Because transportation directly impacts economic strength, social equity and environmental sustainability, thereby giving transport data high potential in the open data domain, as mobile technology and social media allow for unprecedented re-use and the easy flow of data through digital networks.

More cellphones in the world than people!



## THE MISSION

17 September 2012 saw policy makers, experts, opinion leaders and other stakeholders from the transport data community at the Open Transport Data Workshop organised by the ePSI Platform. Their mission - create a manifesto - identify the challenges and issues hampering the free flow of transport data across Europe, focus on the opportunities and benefits of opening up and sharing this rich resource, and allocate the responsibilities of meeting the challenges among the stakeholders.

Let's join forces and help each other grow!

## SO, WHAT SHOULD WE DO?

Play our part! All of us: operators and data holders in the public and private sectors; developers; experts, opinion leaders and policy makers; the European Commission; end-users and, in particular, the open data community. Do what it takes to make the dream a reality.

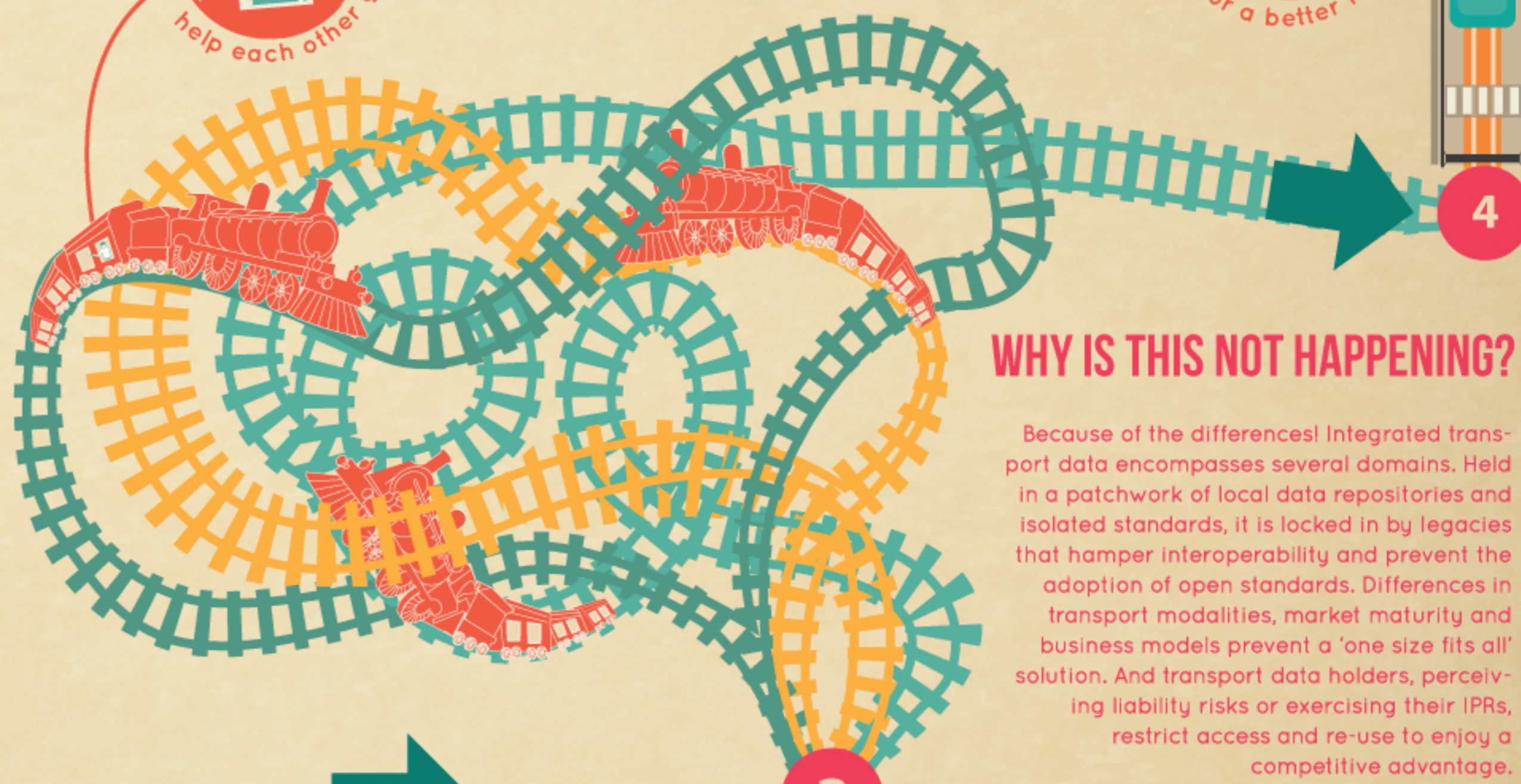
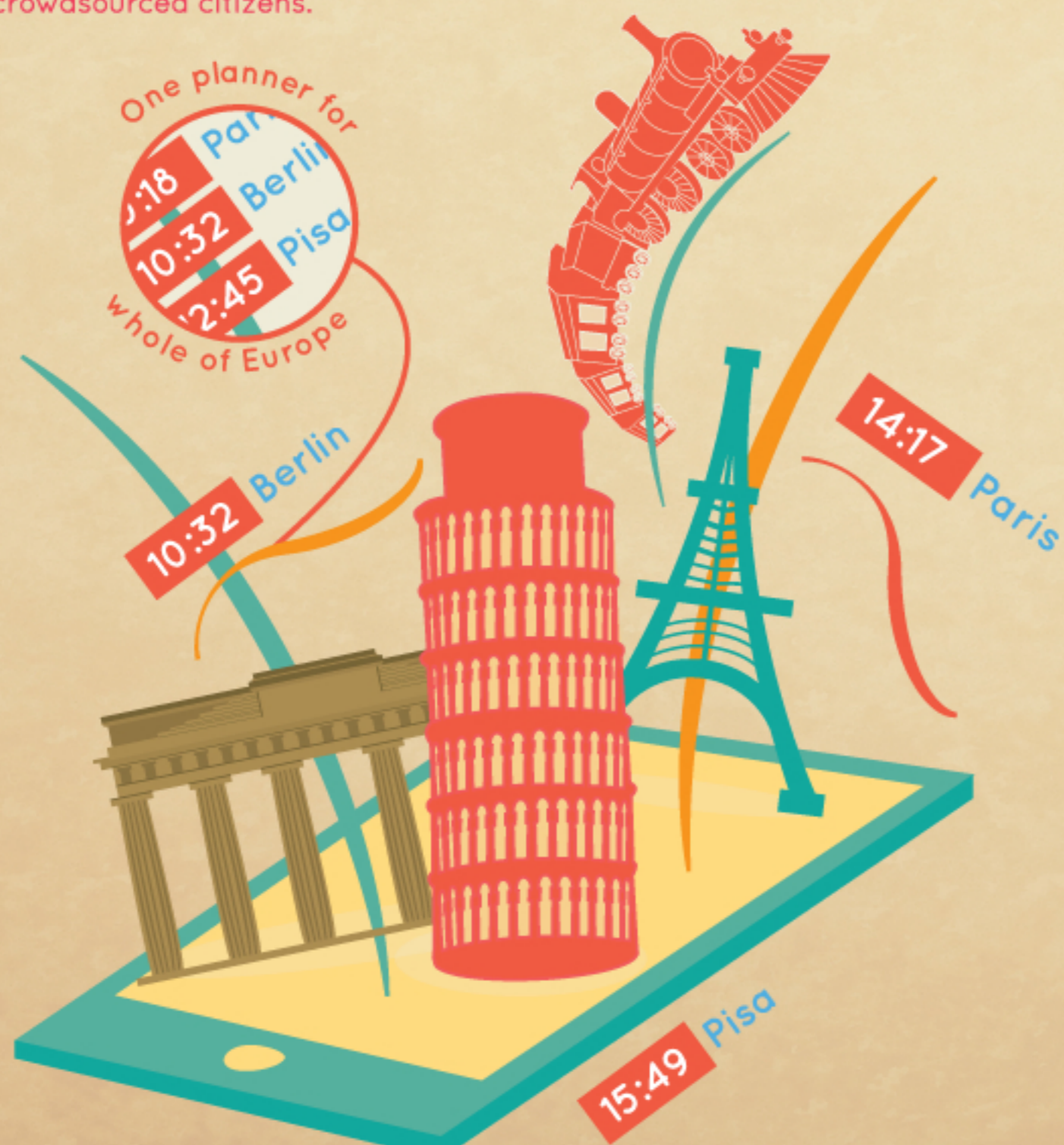
Everyone can help for a better future

5

2

## JUST IMAGINE

A real-time seamless multi-modal travel planner that integrates all types of transport and associated data, making daily travel a breeze! Or an enriched user experience as a consequence of feedback from crowdsourced citizens.



## WHY IS THIS NOT HAPPENING?

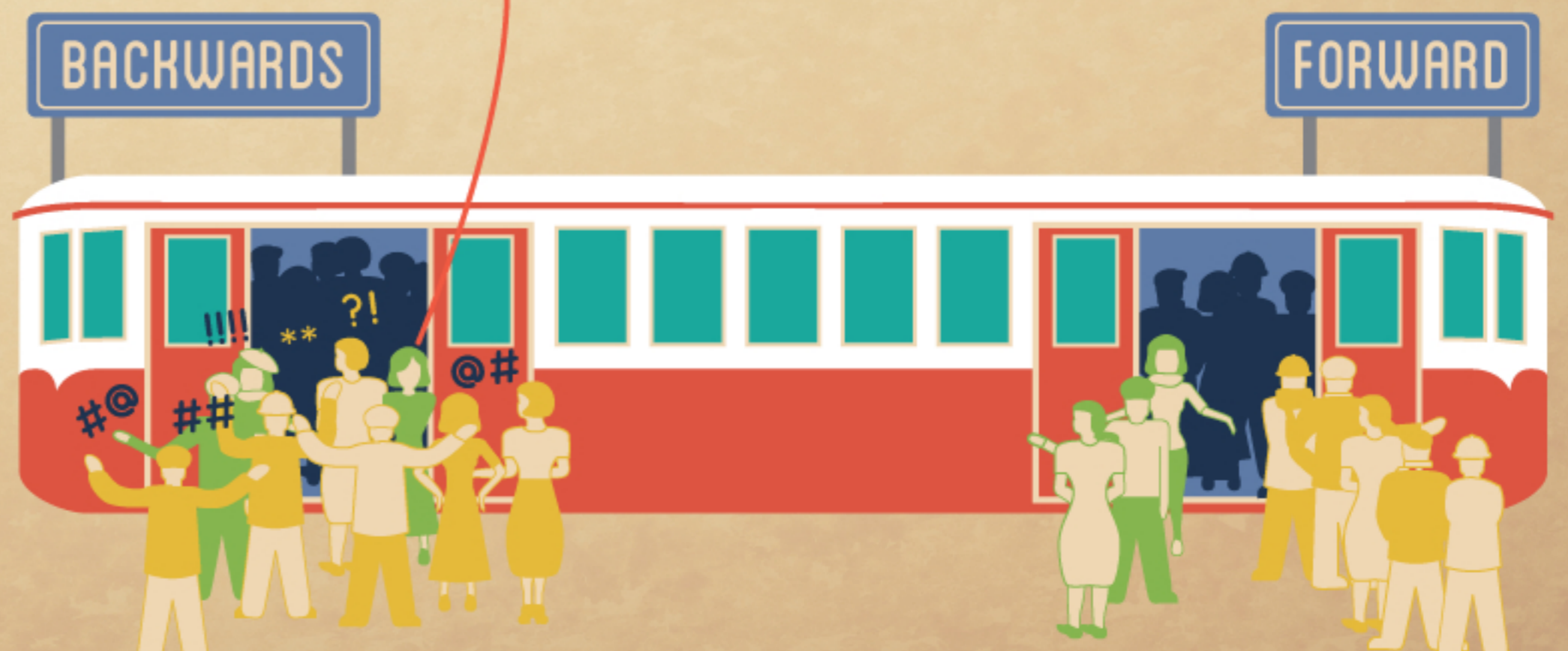
Because of the differences! Integrated transport data encompasses several domains. Held in a patchwork of local data repositories and isolated standards, it is locked in by legacies that hamper interoperability and prevent the adoption of open standards. Differences in transport modalities, market maturity and business models prevent a 'one size fits all' solution. And transport data holders, perceiving liability risks or exercising their IPRs, restrict access and re-use to enjoy a competitive advantage.

3

## SO, WHAT DO WE NEED?

Not exceptionally, but as a rule! Universal access and re-use of high quality transport data in real time, for free or at least under fair conditions, together with an inclusive infrastructure, based on common open, non-discriminatory and interoperable standards to which operators, service providers and users can connect.

We could be moving faster instead of slower



4

5